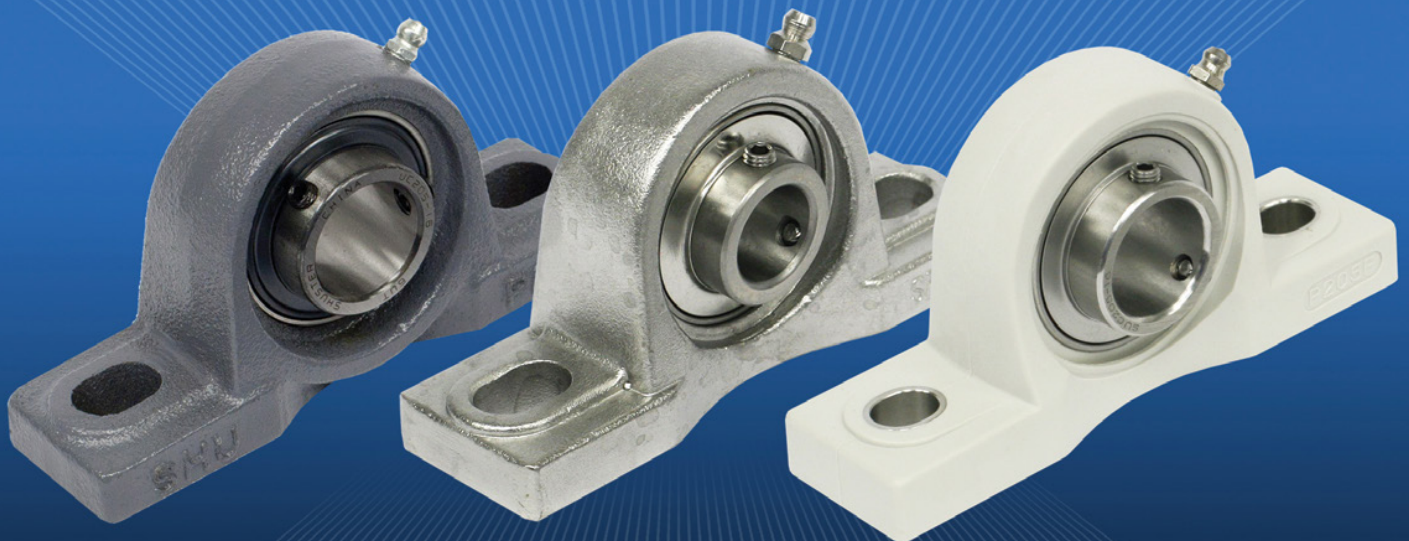




The Source for All Your Bearing Needs



CAST IRON MOUNTED UNITS | STAINLESS STEEL MOUNTED UNITS | THERMOPLASTIC MOUNTED UNITS



Shuster brand Mounted Bearings are used in a variety of industries across the world including:

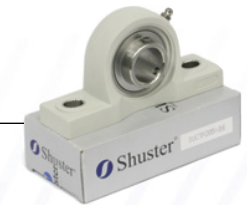
- Food Processing
- Packaging
- Poultry and Seafood
- Air Movement
- Pulp and Paper
- Fitness Equipment
- Conveyors
- Pharmaceutical/Medical
- Many Other Applications for Industry and Consumer Goods



Shuster Mounted bearings are available in pillow block, 2 bolt flange or 4 bolt flange configurations and are manufactured to exacting specifications offering these standard features:

- Cast Iron Housing
 - ♦ Durable cast iron machined housing
 - ♦ Solid base construction standard
 - ♦ Inserts made of 52100 bearing steel, heat treated to resist wear and fatigue
- Stainless Steel Housing
 - ♦ High-quality corrosion-resistant stainless steel housing material
 - ♦ Machined solid base and smooth finish for wash down applications
 - ♦ Inserts made of stainless steel to provide superior corrosion resistance
- Thermoplastic Housing
 - ♦ Plastic housing is corrosion-resistant and can withstand temperatures up to 285°F
 - ♦ Solid base to prevent bacteria buildup
 - ♦ Stainless steel reinforced mounting holes
 - ♦ Inserts made of stainless steel to provide superior corrosion resistance

Highest Quality Standards



Shuster Mounted Bearings

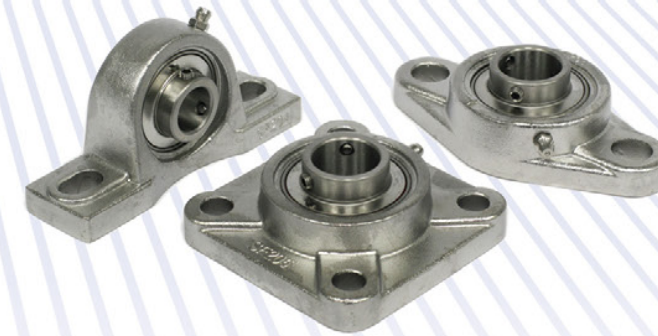
Rely on Shuster for value-added bearing solutions, including a full line of Mounted Bearings. Shuster delivers outstanding quality at a competitive price, providing you with exceptional value no matter what the application. Shuster Mounted Bearings are produced from high-quality materials, whether cast iron, stainless steel or thermoplastic.

Shuster Mounted Bearings all operate well under a variety of environments, with your choice of materials for your specific application.

- Standard cast iron mounted bearings **IN STOCK!**
- Standard stainless mounted bearings **IN STOCK!**
- Standard thermoplastic mounted bearings **IN STOCK!**
- All mounted bearings come with solid base and smooth surfaces for added strength and to prevent bacteria buildup
- Bearings come individually packaged
- All specials available Made to Order Including 3 bolt flanges and more
- Set screw and eccentric locking collar styles available



Cast Iron



Stainless Steel



Thermoplastic



Shuster Corporation
55 Samuel Barnet Boulevard
New Bedford, MA 02740

800-467-3525

www.shusterbearings.com